

San Joaquin County – Garden Acres Sustainable Communities Plan

Workshop #1 Listening Session

Event Summary

Introduction

On Thursday, October 5th, San Joaquin County Public Works alongside the consultant project team organized its first *Garden Acres Sustainable Communities Plan* Workshop at the Garden Acres Community Center. The workshop aimed to gather feedback and information from the local community members regarding their experiences with safety concerns in the area. The project team facilitated the listening session by using interactive boards to encourage community members to share their feedback and suggestions on safety measures they would like implemented in Garden Acres.

During the workshop, 50 community members visited the interactive boards, provided their feedback on comment cards, and actively participated in the session.

Project team members in attendance included:

- San Joaquin County Public Works
- Fehr & Peers
- AIM Consulting

Project Overview

The Garden Acres Sustainable Communities Plan will establish a vision for how to improve access to safe and sustainable transportation options throughout the Garden Acres neighborhood. This may include things like new sidewalks, bus stop improvements, safe school routes, and more.

Garden Acres is a growing community within San Joaquin County, with new development currently under construction north of Main Street and near Henry Elementary. The growing and changing population may increase the use of existing transportation facilities and the number of children walking to school within the community.



Welcome board outside community center



Community members gather for Listening Session on October 5th

Identifying and prioritizing safe routes to schools and parks, and designing for vulnerable users, can support positive mobility, health, and educational outcomes for Garden Acres. Creating a plan for the neighborhood will set up specific projects for funding and implementation to achieve the visions and goals of Garden Acres residents.

Workshop Format

During the workshop, which was held in the multi-use room in the Garden Acres Community, community members were presented with two informative maps and two interactive boards. They were encouraged to share their thoughts and ideas by attaching post-it notes and color-coded stickers to designated boards, indicating the improvements they would like to see in the plan.

The stations consisted of two interactive maps and two input boards.

- Station 1: Heatmap of crash locations within Garden Acres
- Station 2: Regional Connectivity Map
- Station 3: Where should the County prioritize adding walking and biking facilities?
- Station 4: Improvements: What type of improvements would you like to see in Garden Acres? (pick 3)

Feedback From Community Members

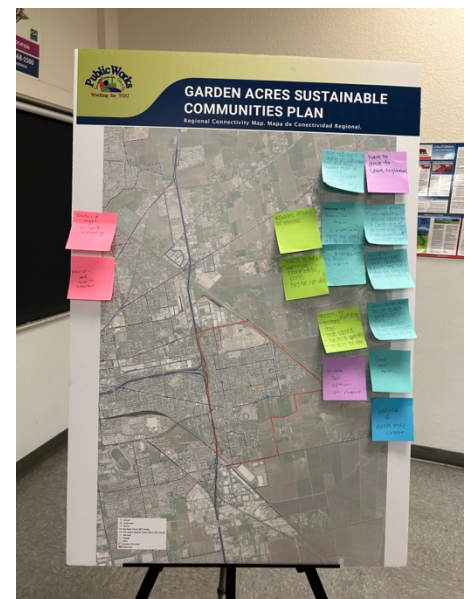
Station 1: Regional Connectivity Map

This station outlined the project area and asked community members to comment on locations for possible improvements.

1. Comments
 - a) Have to drive to leave the neighborhood.
 - b) More stop signs. Walker Lane. Between Road in a ditch. I haven't kept up ditches. Eastside Park is not safe. Sidewalks on Eastside Park.
 - c) Dogs bite people. Car speeding. Only use Washington and Cardinal. No crossing on Main. No way to walk. Want more parks.
 - d) Speeding near Henry Elementary. Running stop signs like the bike lanes feel safer riding.
 - e) The lights stopped working and didn't get fixed.
 - f) 7203 Main St. E. of Garden Acres did not get flyers. No transit.
 - g) Walker & Main not safe to walk. Speeding cars, no police. No sidewalks feel unsafe around parks because there is no lighting.
 - h) Walker St needs more lighting.



Community members were free to give feedback to project team members during the event



Regional Connectivity Map

- i) More speed bumps on Marsh Rd.
- j) Woody's at night, no lights currently.
- k) Main St used to be like downtown.
- l) Sidewalks around all schools.
- m) Scared to bike, want more playgrounds and pools. Bird Ave is not safe.
- n) Too many loose dogs, more lighting, donuts and speeding, and services too far from Garden Acres.

Station 2: Heatmap

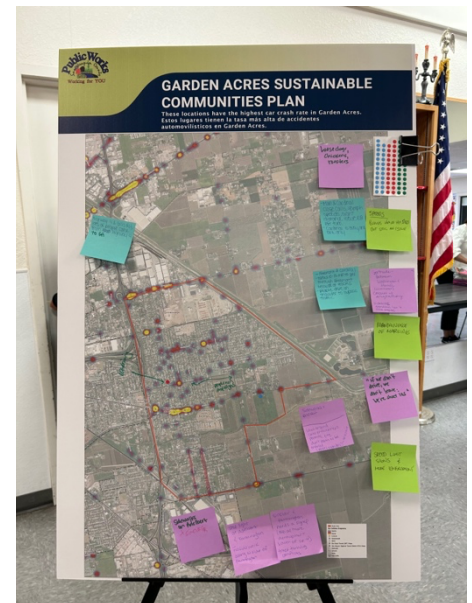
Heatmap of locations within Garden Acres with the highest car crash rate. Community members were asked to comment on additional locations of concern.

1. Comments

- a) Sidewalks on Adelbert/Sinclair (2)
- b) Stoplight at Adelbert & Farmington. No sidewalk along
- c) Speed limit signs & more enforcement.
- d) Sinclair & Farmington needs a signal (especially with more development south of Highway 4)
- e) Laws around code enforcement permits, don't seem to be enforced.
- f) If we don't drive, we don't leave, and we're shut-ins.
- g) Road dividers and proper street markings.
- h) Gertrude between Washington & Horner. Concerns with drug trafficking. Sidewalks, grandson cannot walk outside.
- i) Fremont & Cardinal. It takes 10-15 minutes to get through Fremont because of the tracks. People drive on the shoulder to bypass traffic.
- j) Speed bumps.
- k) Main & Cardinal. Close calls, 45 mph speeds, sight distance issue EB left turn. Cardinal is busy, one lane only.
- l) Loose dogs, chickens, and roosters.
- m) Hwy 4 & Gills Rd, lots of people from Hwy 4 to Garden Acres



Community members give feedback to the project team



Heatmap

Station 3: Improvement Prioritization

This station asked community members where the County should prioritize adding walking and biking facilities.

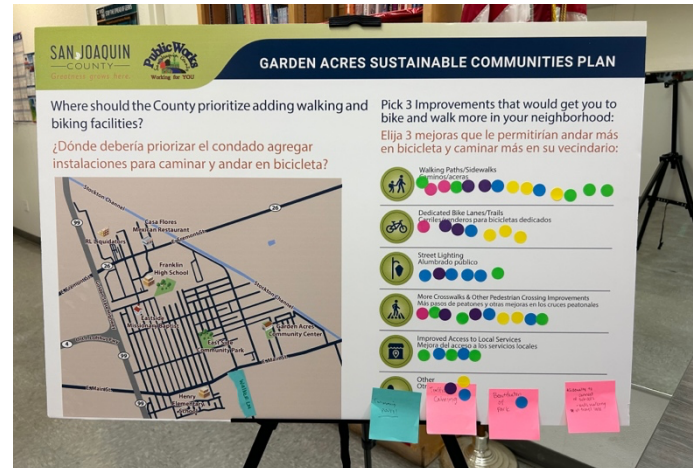
- 1. Walking Paths/Sidewalks (16)
- 2. Dedicated Bike Lanes/Trails (8)

3. Streetlights (7)
4. More Crosswalks and Other Pedestrian Crossing Improvements (10)
5. Improved Access to Local Services (7)
6. Other (comments)
 - a. Swimming Pool
 - b. Traffic Calming (3)
 - c. Beautification of Park (2)
 - d. Sidewalks to connect schools, kids walking in travel lanes.

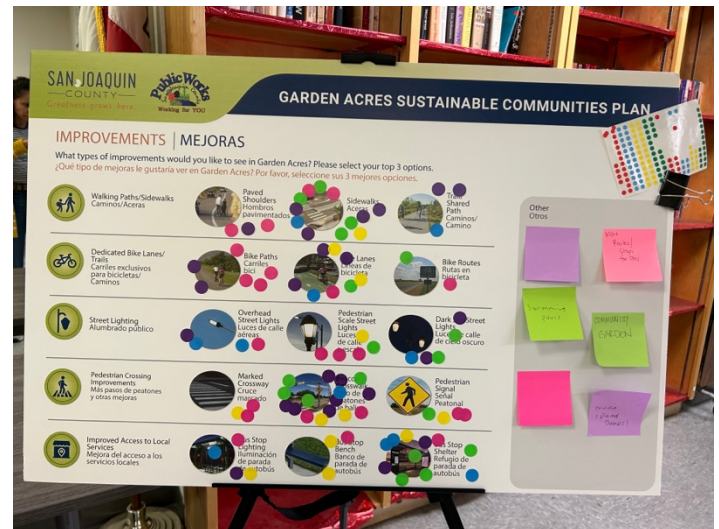
Station 4: Possible Improvements

This station asked what type of improvements they would like to see throughout Garden Acres in the following categories.

1. Walking Paths/Sidewalks
 - a. Paved Shoulders (3)
 - b. Sidewalks (13)
 - c. Trail/ Shared Paths (3)
2. Dedicated Bike Lanes/Trails
 - a. Bike Paths (7)
 - b. Bike Lanes (7)
 - c. Bike Routes (2)
3. Street Lighting
 - a. Overhead Street Lights (4)
 - b. Pedestrian Scale Street Lights (8)
 - c. Dark Sky Street Lights (6)
4. Pedestrian Crossing Improvements
 - a. Marked Crosswalks (3)
 - b. Beacon Crosswalk (16)
 - c. Pedestrian Signals (4)
5. Improved Access to Local Services
 - a. Bus Stop Lighting (3)
 - b. Bus Stop Bench (5)
 - c. Bus Stop Shelters (12)
6. Other (comments)
 - a) More speed bumps!
 - b) Community garden
 - c) More route/stops for bus
 - d) Swimming pool
 - e) More benches at schools/parks



Improvement Prioritization Board

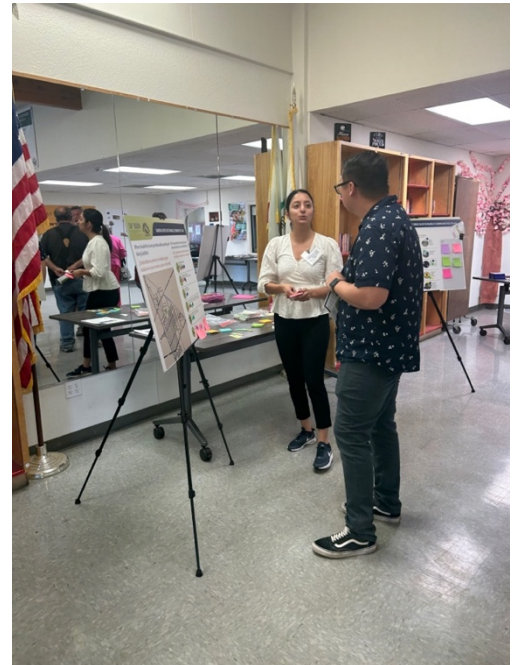


Possible project improvement board

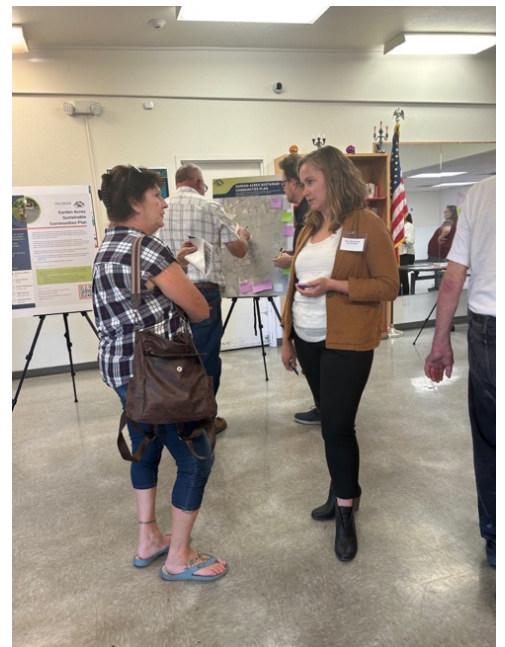
Comment Cards

Comment cards were encouraged for community members to leave input for the project team.

- *Homeless concern (they take stuff we work hard for). New community concerns: Behind Henry Elementary School “Harlan Lane”. We need a walk, a park, speed bumps. More schools if more houses are built. A gate by little levee by Eagle crest. Also trail passes and new stores, like Target, food, and restaurants. If possible, a gate on Eagle Crest to slow traffic too many people running stop signs.*
- *Thank you for bringing this workshop to our community. The community desperately needs safety measures for our kids. Will this really happen or just another project with empty promises?*
- *We need transit, currently none in a country area. A lot of accidents on Highway 26 and Cardinal, so much traffic when school is getting let out. Highway four turning onto Gilas Rd. lots of accidents.*
- *(Spanish) we need safer roads. I walk home and get scared because of speeding cars.*
- *We need sidewalks in Garden Acres. Dog should be on a leash all the time. We need more streetlights. We need more fire hydrants.*
- *We need a community garden. Drug traffic, control, and listen to people’s complaints. Define crosswalks. Bike lanes. Park fixed up and have restrooms. Sidewalks. Speed bumps.*



Community members leave feedback during the event



Public Awareness & Public Notifications

Below is a summary of the notification efforts and strategies implemented by the project team to create awareness about the Garden Acres Sustainable Communities Plan and inform community members about the workshop.

San Joaquin County provided information on the Garden Acres Sustainable Communities Plan, including details on the project, upcoming workshops, and pop-ups.

The project team contacted 100 stakeholder groups representing various entities such as local small businesses, schools, the chamber of commerce, housing, businesses, faith-based organizations within Garden Acres, and social service organizations that provide resources to seniors, persons with disabilities, youth, and families in the region. The project team personally contacted these groups via phone calls and emails, informing them about the upcoming meetings and requesting they disseminate the information to their organization through email newsletters, social media posts, website updates, or other communication links. *All awareness materials were bilingual in English and Spanish for accessibility.*

The following groups shared information:

- City of Stockton, City Manager Office
- San Joaquin County Government (SJGOV)
- Catholic Diocese of Stockton
- Full Gospel Tabernacle Church
- St. Edwards Church
- Reinvent South Stockton Coalition
- Elmwood Elementary
- Franklin High
- Henry Elementary
- San Joaquin Hispanic Chamber of Commerce
- Central Valley Asian American Chamber
- African American Chamber

Additionally, geographically targeted social media posts were posted two weeks before the workshop.

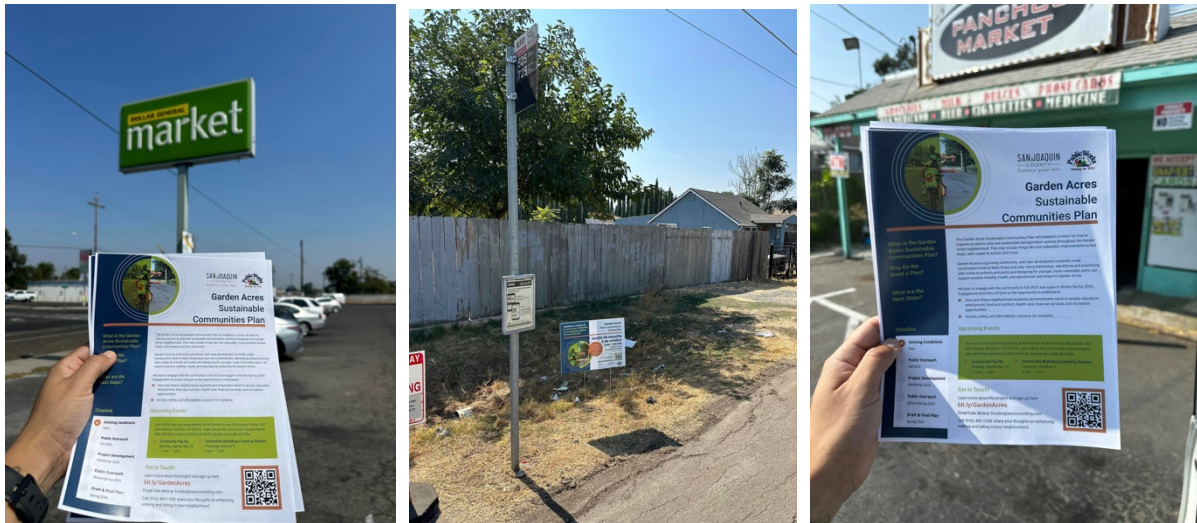
The project team also joined 10 community groups on Facebook to share information with residents in Garden Acres. Including:

- De todo en Stockton
- Stockton - What's Going On
- Stockton 209 Events & More
- Stockton Ventas en Español
- Hispanos en Stockton
- Pulga De Stockton Compra Vende Y Anuncia
- Stockton/209 Ventas Anuncios y Mas



- Stockton News & Crime
- Stockton To Go
- Pulga De Stockton Compra Vende Y Anuncia

AIM Consulting collaborated with San Joaquin County Public Works to communicate important information to County residents through various channels. Additionally, AIM Consulting created a direct mail piece distributed to over 1,500 residents living in the project area.



What are the Next Steps?

The project team plans to continue engaging with the community with a variety of pop-up events at local organizations this winter before our second workshop this spring. Stay tuned!

Engagement activities will give us the opportunity to understand:

- How and where neighborhood residents and employees travel to access education, employment, food and nutrition, health care, financial services, and recreation opportunities.
- Access, safety, and affordability concerns for residents.
- The neighborhood's environmental burdens and vision for land use planning.

Stay engaged at our project website:

<https://fp.mysocialpinpoint.com/garden-acres-sustainable-community-plan>